

Use of Magnetic Resonance Tractography in Detecting Specific Features of the Impairment of Conduction Pathways and Their Prognostic Value in Parkinson's Disease Complicated by Freezing of Gait

DOI: 10.17691/stm2016.8.4.22

Received May 16, 2016

A.G. Trufanov, MD, DSc, Lecturer, Department of Nervous Diseases¹;R.R. Khalimov, Head of Neurological Department²;A.A. Yurin, PhD Student, Department of Nervous Diseases¹;I.V. Litvinenko, MD, DSc, Professor, Head of the Department of Nervous Diseases¹¹S.M. Kirov Military Medical Academy, 6 Academic Lebedev St., Saint Petersburg, 194044, Russian Federation;²354th District Military Clinical Hospital, 87 Dekabristov St., Ekaterinburg, 620144, Russian Federation

The aim of the study was to determine the localization of conductive pathways in patients with Parkinson's disease (PD) complicated with freezing of gait, by using data from magnetic resonance tractography, and to identify the prognostic value of these pathways in predicting the course of the disease.

Materials and Methods. 78 patients with idiopathic PD were examined and divided into two groups: patients with freezing of gait (n=31) and without freezing of gait (n=47). The protocol of the investigation consisted of clinical evaluation of the condition of the patients to determine the stage of the disease, and the use of a Siemens MRI Device (magnetic induction field, 1.5 T) to obtain standard images of the coronary, axial and sagittal planes, as well as MRI-protocols of the T1 gradient echo, plus diffusion-tensor tractography with further analysis of the findings with FreeSurfer software.

Results. The groups of patients showed statistically significant differences in the levels of the tract length, diffusivity and fractional anisotropy in the anterior thalamic radiations of both sides, the temporal area of the superior longitudinal fascicle on the left, the parietal area of the superior longitudinal fascicle on the right, and the corticospinal tract on the right. Analysis of the correlative tractographic values with the total scores on the walk-and-balance scale revealed that the highest prognostic value in the development of freezing of gait pertained to damage to the thalamo-frontal tract. A reduction in the value of the maximum voxel length to 80.0 or below, increased the risk of development of freezing of gait in 10 times.

Conclusion. The results demonstrate the involvement of conduction pathways in the mechanisms leading to freezing of gait in PD. Early diagnosis and prediction of the development of this complication using magnetic resonance tractography can indicate the need to adjust the medical treatment and to develop an appropriate special system of rehabilitation.

Key words: magnetic-resonance tractography; freezing of gait in Parkinson's disease; freezing of gait.

How to cite: Trufanov A.G., Khalimov R.R., Yurin A.A., Litvinenko I.V. Use of magnetic resonance tractography in detecting specific features of the impairment of conduction pathways and their prognostic value in Parkinson's disease complicated by freezing of gait. *Sovremennye tehnologii v medicine* 2016; 8(4): 178–184, <https://doi.org/10.17691/stm2016.8.4.22>

Russian

Особенности поражения проводящих путей и их прогностическая ценность при болезни Паркинсона, осложненной нарушениями ходьбы высшего уровня (по данным магнитно-резонансной трактографии)

A.Г. Труфанов, д.м.н., преподаватель кафедры нервных болезней¹;Р.Р. Халимов, начальник неврологического отделения²;А.А. Юрин, адъюнкт кафедры нервных болезней¹;И.В. Литвиненко, д.м.н., профессор, начальник кафедры нервных болезней¹

For contacts: Artem G. Trufanov, e-mail: trufanovart@gmail.com

¹Военно-медицинская академия им. С.М. Кирова, Санкт-Петербург, 194044, ул. Академика Лебедева;
²354-й Окружной Военный Клинический Госпиталь, Екатеринбург, 620144, ул. Декабристов, д. 87

Цель исследования — установить локализацию поражения проводящих путей у пациентов с болезнью Паркинсона (БП), осложненной нарушениями ходьбы высшего уровня, по данным магнитно-резонансной трактографии и определить предикторную ценность этих путей в прогнозировании течения заболевания.

Материалы и методы. Обследовано 78 больных с идиопатической БП, которые разделены на две группы: пациенты с застываниями (n=31) и без застываний (n=47). Протокол обследования состоял из клинической оценки состояния больных с определением стадии болезни, выполнения МРТ на аппарате Siemens (индукция магнитного поля — 1,5 Тл) с получением стандартных изображений в коронарной, аксиальной и сагиттальной плоскостях, а также МРТ-протоколов T1 градиентного эха и диффузионно-тензорной трактографии, с последующим анализом данных с помощью программного обеспечения FreeSurfer.

Результаты. Между группами пациентов выявлены статистически значимые различия в уровнях длины тракта, диффузности и фракционной анизотропии в передней таламической радиации с обеих сторон, височной части верхнего продольного пучка слева, теменной части верхнего продольного пучка справа, кортикоспинальном тракте справа. Анализ корреляционных трактографических показателей с суммой баллов по шкале ходьбы и равновесия показал, что наибольшую прогностическую ценность в развитии нарушений ходьбы высшего уровня представляет поражение таламофронтального пути. Уменьшение показателя максимальной длины вокселей до значения ниже 80,0 увеличивает риск развития застываний в 10 раз.

Заключение. Полученные результаты указывают на вовлечение проводящих путей в механизмы развития застываний при БП. Ранняя диагностика и прогнозирование развития этого осложнения с помощью магнитно-резонансной трактографии позволит скорректировать проводимую медикаментозную терапию и разработать специальную систему реабилитации.

Ключевые слова: магнитно-резонансная трактография; застывания при болезни Паркинсона; нарушения ходьбы высшего уровня.

Introduction. Gait disorders in Parkinson's disease (PD) are some of the most significant motor disorders, their severity reflecting the severity of the patient's condition and their quality of life. Numerous recent studies have shown that gait disorders can be considered to be the fifth independent pivotal symptom of parkinsonism (along with hyperkinesia, rigidity, resting tremor and postural disorders), having their own pathogenetic mechanisms of development and requiring specific approaches to treatment [1–3].

As PD progresses, the typical gait pattern (a shuffling gait with shortened steps) changes and is accompanied by more complicated disorders manifested as impairment of walk initiation, instability when turning, freezing of gait (FOG) and, as a result, by falls. Gait disorders in the late stages of PD stages can be attributed to freezing of gait that are integrative impairments of motion control that cannot be explained only by the damage to the brainstem and basal ganglia [3, 4]. These disorders are caused by damage to the frontal lobes and their interconnections, as is indicated by the association of gait disorders in the late stages of PD with cognitive disorders reaching the level of dementia, predominantly of the frontal type. Disorders of gait control in the late stages of PD can be described as “primary”, because they are caused by impairment of the process of choice in the initiation of locomotor and postural programs, rather than by their implementation, and because they do not depend on any other neurological pathology (for example, sensitivity disorders, paresis or increased muscle tonus), nor are they changed by dopaminergic therapy or during the “on/off” periods. Freezing of gait are particularly manifested in rough transition situations — at the start of walking; when

turning; or when rising (i.e. when one motor program has to transition into another) and, therefore, they reflect a “defect in planning”.

Many researchers [4–7] have evaluated cerebral anatomic structures that may be associated with freezing. We have identified pathological changes in the white matter in the auxiliary motor area, the premotor area, the orbitofrontal area, the caudate nucleus, the right parietal cortex, the putamen and the pedunclopontine nucleus.

Diffusion-tensor tractography (DTT) is a new method allowing us to visualize the fibers of the conduction pathways *in vivo*. In 2011 a group of Korean researchers [6] performed magnetic resonance tractographic investigations on 14 patients having PD complicated by freezing of gait in comparison with 24 patients without such disorders, by evaluating 7 areas of the brain. In these groups of patients they identified statistically significant differences in the level of fractional anisotropy in the pedunclopontine nucleus and the upper premotor areas on both sides, as well as in the right orbitofrontal cortex and the left auxiliary motor area, but they did not reveal any significant differences in the diffusivity levels. Furthermore, they did not assess the prognostic value of pathology in the white matter in relation to the freezing of gait in these patients.

The aim of the study was to determine the localization of lesions in the conductive pathways of patients with Parkinson's disease complicated by freezing of gait, by using data from magnetic resonance tractography, and to identify the prognostic value of the changes in these tracts in predicting the course of the disease.

Materials and Methods. We examined 78 right-handed patients with idiopathic PD diagnosed in

accordance with the criteria of the British Brain Bank. All the patients presented with 3rd stage PD according to the Hoehn and Yahr scale, 49 (63.6%) with an akinetic-rigid form, and 29 (36.4%) had a mixed form of PD. The patients were divided into two groups: with freezing (n=31) and without freezing (n=47). We used the Gait and Balance scale, GBS, which provides a more accurate measure of freezing than those of Section III of the Unified Parkinson's Disease Rating Scale or the FOG scale. Optimization of dopaminergic therapy in

the groups of patients with freezing of gait did not lead to improvements in the gait nor to any reduction in the number of freezing episodes; neither did it show any connection with the development of freezing in the "off" periods. The general characteristics of the patients are presented in Table 1.

All the patients underwent MRI on a Siemens (Germany) unit, using an induction magnetic field of 1.5 T to obtain standard images, T1-WI and T2-WI in the coronary, axial and sagittal planes. Furthermore a protocol of T1 gradient echo and DTT was used with all the patients, with subsequent analysis of the findings using FreeSurfer software. 16 anatomical conduction tracts from the right and left hemispheres of the brain were statistically analyzed. Correlations were calculated using Spearman's rho. The data were processed with Statistica 8.0 by StatSoft (Mann-Whitney test). To determine the odds ratio we used WinPepi for Windows software.

Results. We determined statistically significant differences between the groups of patients with PD in

Table 1

General characteristic of the patients in the study

Patients	Average age (years)	Duration of the disease (years)	Score according to the FOG scale (points)
With of gait (n=31)	62.7±5.4	8.3±3.8	30.7±10.2
Without of gait (n=47)	61.1±6.2	7.3±5.0	8.0±3.9

Table 2

Differences between the parameters of the conduction pathways in the left hemisphere of patients with and without freezing (Me [LQ; UQ])

Localization of the tract	Patients		p
	With freezing	Without freezing	
Anterior thalamic radiation (AD·10 ⁻⁶)	1,215 [1,203; 1,277]	1,185 [1,172; 1,202]	0.037
Cingulum bundle (MD·10 ⁻⁶)	825 [806; 832]	779 [764; 805]	0.019
Superior longitudinal fasciculus — temporal part (RD·10 ⁻⁶)	625 [603; 734]	588 [559; 606]	0.034
Superior longitudinal fasciculus — temporal part (FA)	0.4063 [0.3575; 0.4300]	0.4250 [0.3811; 0.4350]	0.046

Notes. MD: medium diffusivity, AD: axial diffusivity, RD: radial diffusivity, FA: fractional anisotropy.

Table 3

Differences between the parameters of the conduction pathways in the right hemispheres of patients with and without freezing (Me [LQ; UQ])

Localization of the tract	Patients		p
	With freezing	Without freezing	
Anterior thalamic radiation (MaxL)	80.0 [74.0; 84.0]	98.0 [83.0; 102.0]	0.021
Corticospinal tract (RD·10 ⁻⁶)	630 [616; 668]	555 [521; 564]	0.030
Corticospinal tract (MD·10 ⁻⁶)	870 [837; 891]	787 [762; 810]	0.028
Inferior longitudinal fasciculus (AvL)	73.0 [72.0; 75.0]	85.0 [81.0; 87.0]	0.015
Superior longitudinal fasciculus — temporal part (RD·10 ⁻⁶)	640 [614; 691]	592 [566; 611]	0.011
Superior longitudinal fasciculus — temporal part (MD·10 ⁻⁶)	827 [791; 852]	767 [759; 779]	0.032

Notes. MaxL: maximum voxel length, AvL: average voxel length, MD: medium diffusivity, RD: radial diffusivity.

relation to the parameters of the main conduction pathways in the left (Table 2) and the right (Table 3) hemispheres of the brain. These differences concerned the tractographic characteristics of the cingulum bundle, the anterior thalamic radiations (thalamo-anterior tracts) and the temporal area of the longitudinal fascicles. We noted an increase in the values of radial diffusivity and a reduction in the fractional anisotropy along the line of the upper longitudinal fascicles in the temporal area, which testifies to its considerable involvement in the pathological process.

In the patients with freezing the right hemisphere had more severe damage of the white matter. The main component of the pyramidal system — the corticospinal tract — is involved in the pathological process, mainly through an increase in the medium diffusivity of the conductor. As in the dominant hemisphere, the right hemisphere has damaged upper longitudinal fascicles, however there is also damage not only in the temporal, but additionally in the parietal area.

As well as differences in the upper longitudinal fascicles, these groups of patients had statistically significant differences in the characteristics of the lower longitudinal fascicles — the links between the occipital and temporal lobes. When there is freezing, the anterior thalamic radiation has a bilateral nature, and in the right hemisphere there is a reduction in the length of this tract.

The localization and the courses of the conduction pathways most involved in the

pathological process of the patients with freezing are represented in Figures 1–6.

To identify possible markers of the development of freezing of gait in PD we performed a correlation analysis

between the tractographic parameters and the GBS scores using Spearman's rho (Table 4).

When the dominant hemisphere was evaluated, freezing had a strong positive correlation only with radial

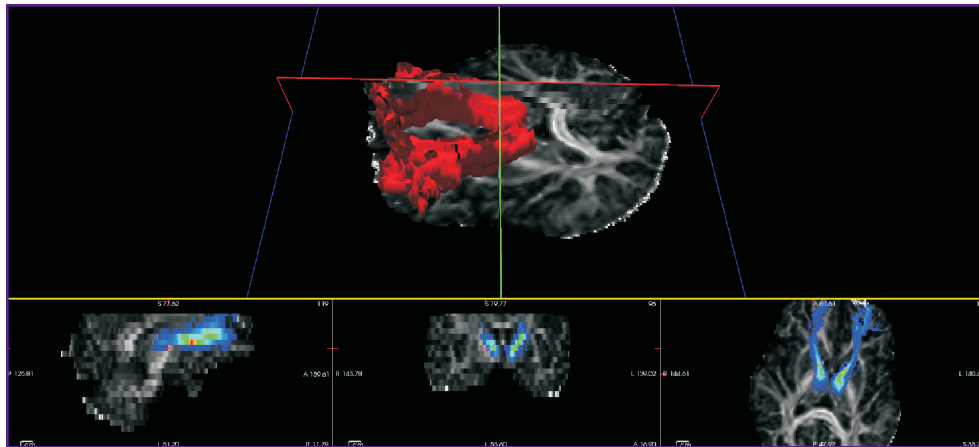


Figure 1. Localization and the course of the thalamo-frontal tract

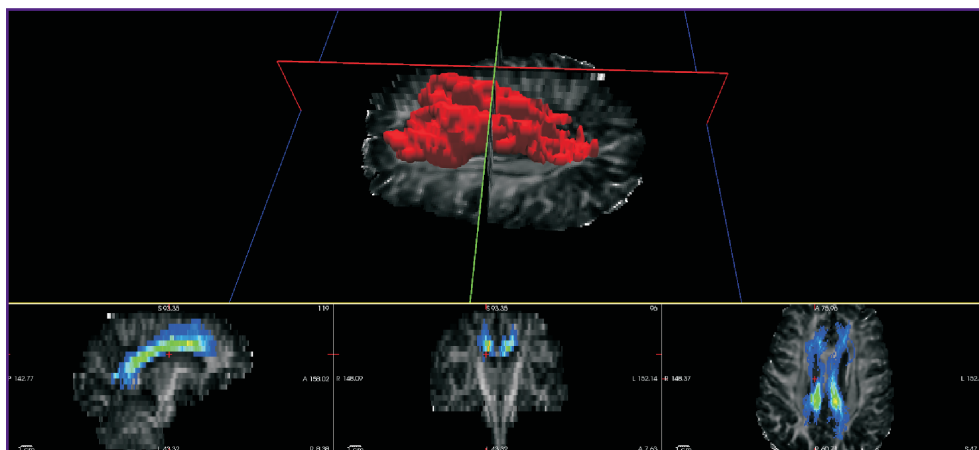


Figure 2. Localization and the course of the cingulum bundle

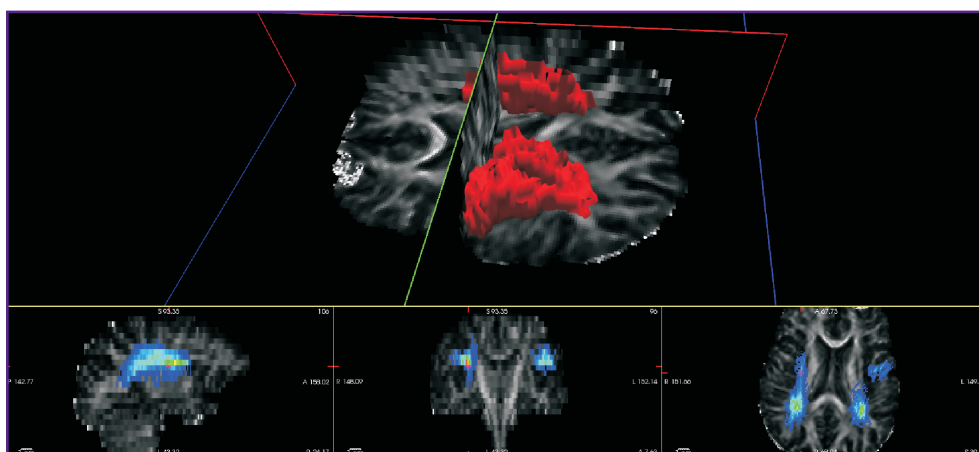


Figure 3. Localization and the course of the superior longitudinal fasciculus in the temporal area

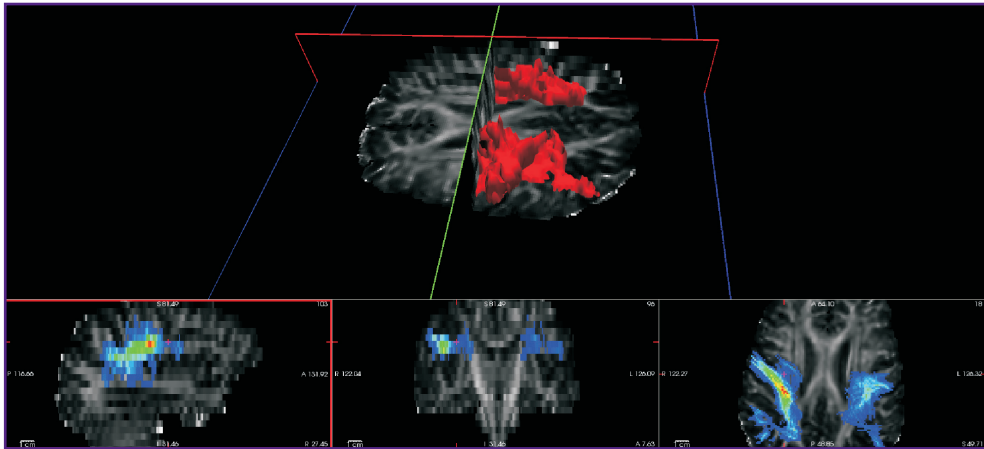


Figure 4. Localization and the course of the superior longitudinal fasciculus in the parietal area

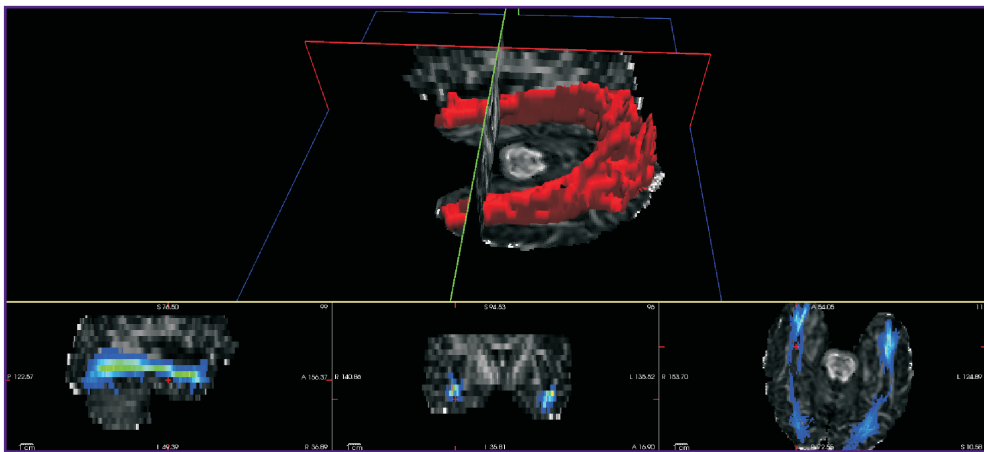


Figure 5. Localization and the course of the inferior longitudinal fasciculus

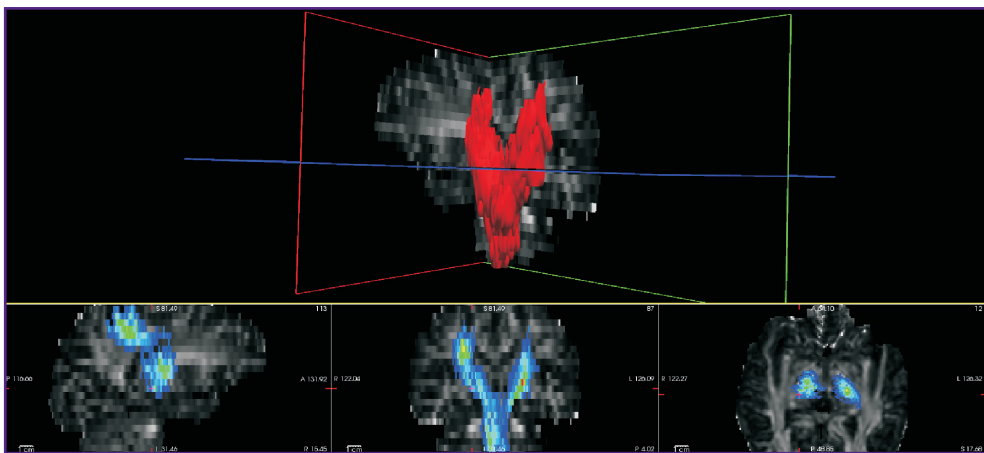


Figure 6. Localization and the course of the corticospinal tract

diffusivity in the angular bundle that was part of the limbic system, providing frontal–temporal interactions.

Evaluation of the right hemisphere indicated that

freezing had a strong negative correlation with the level of fractional anisotropy of the lower longitudinal fascicles, as well as indicating explicit positive links

Table 4

Correlation of magnetic resonance tractography with the GBS scores in patients with freezing ($p < 0.05$)

Localization	Spearman's rho (r)
<i>Left hemisphere of the brain</i>	
Angular part of cingulum bundle (RD)	0.74
<i>Right hemisphere of the brain</i>	
Anterior thalamic radiation (RD)	0.89
Anterior thalamic radiation (MD)	0.83
Anterior thalamic radiation (FA)	-0.85
Inferior longitudinal fasciculus	-0.91

Notes. MD: medium diffusivity, RD: radial diffusivity, FA: fractional anisotropy.

between the freezing phenomenon and damage to the thalamo-frontal tract.

To determine the risk of freezing depending on the values of the tractographic parameters we calculated the odds ratio for the right anterior thalamic radiations (OR-10.0). As the critical values we used the medians (Me — 80.0) and 95% confidence intervals (2.41–20.30) of the corresponding parameters in the patients with freezing of gait ($p < 0.001$).

Discussion. The findings suggest that the effects of extensive damage to the white matter of the brain in PD are complicated by freezing of gait. It is possible to identify certain tracts which have the biggest impact on the development of this complication, and therefore have prognostic value.

In our opinion the most important tracts of all those investigated is the anterior thalamic radiation and the thalamo-anterior path. It is known that thalamo-frontal path is an integral part of the cholinergic motion control system. For this conductor we detected not only multiple differences between the groups of patients with freezing and without freezing, but also strong correlations of the corresponding parameters with the walk-and-balance scale. The statistically significant negative relationships between postural disorders and the parameters of fractional anisotropy are worth mentioning. If a focus on diffusivity parameters is difficult due to the limited range of values, a periodical analysis of fractional anisotropy can be quite valuable from the prognostic point of view. If the patient has a dynamic reduction in the fractional anisotropy of the thalamo-frontal path, one can expect the development of freezing, caused mainly by the dysfunction of the frontal lobes. Such a prognosis allows the prescribing of an effective therapy as soon as possible.

According to our data damage in the upper longitudinal fascicles is a particularly important indicator of the development of gait disorders. It was found that the temporal area of the right longitudinal fascicle suffers mainly in the left (dominant) hemisphere whereas it is the parietal part that is mainly involved in the case of the right hemisphere. Taking into account the

considerable spread of this conductor and the presence (except in the frontal, parietal and temporal areas) of a large number of sub-bundles providing information exchange between the most significant integrative fields of the lobes of the hemisphere, dysfunction of the upper longitudinal fascicles can, to a great extent, determine the pathogenesis of freezing of gait. The developing dysfunction of this conductor is a secondary effect and is the result of considerable damage within the brain cortex at late stages of PD [8, 9].

This paper has shown the increase in the radial and medium diffusivity of the right corticospinal pathways in the case of gait disorders. Further studies of the damage to these structures are of interest, because some PD patients also complain of reduced strength in their limbs. These complaints appear mainly subjective, given that dynamometry, as a rule, does not show any changes in muscular strength. It should be noted that the identified pathology of the corticospinal pathways and of the pre-central fissures does not lead to the formation of an actual pyramidal insufficiency, excepting the presence of pathological reflexes in these patients [10, 11].

In patients with PD and gait disorders, taking into account the signs of the involvement of the thalamo-frontal tract in the pathological process, it would be promising to study, further, the effectiveness of a combined approach to the correction of motor disorders using cholinergic medications and repeated sessions of transcranial magnetic stimulation [12].

Conclusion. Early diagnosis and forecasting of freezing in PD using magnetic-resonance tractography can help in adjusting medical therapy and in the development of bespoke systems of rehabilitation.

Study Funding and Conflicts of Interest. This study was not supported by any financial sources and there is no topic specific conflicts of interest related to the authors of this study.

References

1. Дамулин И.В., Павлова А.И. Деменция лобного типа. Неврологический журнал 1997; 1: 37–42. Damulin I.V., Pavlova A.I. Dementia of frontal type. *Nevrologicheskiy zhurnal* 1997; 1: 37–42.
2. Дамулин И.В., Жученко Т.Д., Левин О.С. Нарушение равновесия и походки у пожилых. В кн.: Достижения в нейрогерiatrics. Т. 1. Под ред. Яхно Н.Н., Дамулина И.В. М; 1995; с. 71–97. Damulin I.V., Zhuchenko T.D., Levin O.S. Narushenie rovnovesiya i pokhodki u pozhilykh. V kn.: *Dostizheniya v neyrogeriatrics*. Т. 1 [Balance and gait disorders in elderly people. In: Achievements in neurogeriatrics. Vol. 1] Pod red. Yakhno N.N., Damulina I.V. [Yakhno N.N., Damulin I.V. (editors)]. Moscow; 1995; p. 71–97.
3. Левин О.С. Нарушения ходьбы: механизмы, классификация, принципы диагностики и лечения. В кн.: Экстрапирамидные расстройства. Под ред. Штока В.Н., Ивановой-Смоленской И.А., Левина О.С. М; 2002; с. 473–494. Levin O.S. Narusheniya khod'by: mekhanizmy, klassifikatsiya, printsipy diagnostiki i lecheniya. V kn.: *Ekstrapiramidnye rasstroystva* [Gait disorders: mechanisms, classification,

and principles of diagnosis and treatment. In: Extraparallel disorders]. Pod red. Shtoka V.N., Ivanovoy-Smolenskoy I.A., Levina O.S. [Shtoka V.N., Ivanova-Smolenskaya I.A., Levin O.S. (editors)]. Moscow; 2002; p. 473–494.

4. Левин О.С., Юнищенко Н.А., Скворцов Д.В. Клинико-инструментальный анализ ходьбы и постральной неустойчивости при болезни Паркинсона. В кн.: Материалы VII Международной конференции «Современные технологии восстановительной медицины». Сочи; 2004; с. 15–18. Levin O.S., Yunishchenko N.A., Skvortsov D.V. Kliniko-instrumental'nyy analiz khod'by i postural'noy neustoychivosti pri bolezni Parkinsona. V kn.: *Materialy VII Mezhdunarodnoy konferentsii "Sovremennyye tekhnologii vosstanovitel'noy meditsiny"* [Clinical-instrumental analysis of gait and postural instability in Parkinson's disease. In: Materials of the VII International Conference "Modern technology in rehabilitation medicine"]. Sochi; 2004; p. 15–18.

5. Bartels A.L., Balash Y., Gurevich T., Schaafsma J.D., Hausdorff J.M., Giladi N. Relationship between freezing of gait (FOG) and other features of Parkinson's: FOG is not correlated with bradykinesia. *J Clin Neurosci* 2003; 10(5): 584–588, [https://doi.org/10.1016/S0967-5868\(03\)00192-9](https://doi.org/10.1016/S0967-5868(03)00192-9)

6. Grossi D., Trojano L., Pellicchia M.T., Amboni M., Fragassi N.A., Barone P. Frontal dysfunction contributes to the genesis of hallucinations in non-demented Parkinsonian patients. *Int J Geriatr Psychiatry* 2005; 20(7): 668–673, <https://doi.org/10.1002/gps.1339>.

7. Ito K., Nagano-Saito A., Kato T., Arahata Y., Nakamura A., Kawasumi Y., Hatano K., Abe Y., Yamada T., Kachi T., Brooks D.J. Striatal and extrastriatal dysfunction in Parkinson's disease with dementia: a 6-[18F]fluoro-L-dopa PET study. *Brain* 2002; 125 (Pt 6): 1358–1365, <https://doi.org/10.1093/brain/awf134>.

8. Труфанов А.Г., Одинак М.М., Литвиненко И.В., Резванцев М.В., Воронков Л.В. Ранняя диагностика деменции при болезни Паркинсона с использованием

МР-морфометрии. Военно-медицинский журнал 2013; 334(9): 29–34. Trufanov A.G., Odnak M.M., Litvinenko I.V., Rezvantsev M.V., Voronkov L.V. Early diagnosis of dementia with the help of MR-morphometry in patients with Parkinson's disease. *Voенno-meditsinskiy zhurnal* 2013; 334(9): 29–34.

9. Литвиненко И.В. Деменция и психотические нарушения при паркинсонизме: общность возникновения и новые перспективы в терапии. Успехи геронтологии 2004; 13: 94–101. Litvinenko I.V. Dementia and psychotic disorders in parkinsonism: common origin and new perspectives in therapy. *Uspekhi gerontologii* 2004; 13: 94–101.

10. Литвиненко И.В., Михайленко А.А., Труфанов А.Г., Аношина Е.А., Ильинский Н.С. Нейровизуализационные основы патологических рефлексов на 2–3 стадиях (по Хен и Яру) болезни Паркинсона. Вестник Российской военно-медицинской академии 2012; 4(40): 116–120. Litvinenko I.V., Mikhailenko A.A., Trufanov A.G., Anoshina E.A., Ilyinskiy N.S. Neuroimaging basement of pathological reflexes in 2–3 stages (Hoehn, Yahr scale) of Parkinson disease. *Vestnik Rossiyskoy voenno-meditsinskoy akademii* 2012; 4(40): 116–120.

11. Труфанов А.Г., Литвиненко И.В., Ефимцев А.Ю. Поражение анатомических проводящих путей головного мозга на 2–3-й стадиях (по Хен и Яру) болезни Паркинсона. Вестник Российской военно-медицинской академии 2012; 4(40): 36–41. Trufanov A.G., Litvinenko I.V., Efimtsev A.Yu. The anatomical brain pathways affection in advanced 2–3 stages (Hoehn, Yahr scale) of Parkinson disease. *Vestnik Rossiyskoy voenno-meditsinskoy akademii* 2012; 4(40): 36–41.

12. Литвиненко И.В., Халимов Р.Р., Труфанов А.Г., Красаков И.В., Хаймов Д.А. Новые возможности коррекции нарушений ходьбы на поздних стадиях болезни Паркинсона. Успехи геронтологии 2012; 25(2): 267–274. Litvinenko I.V., Khalimov R.R., Trufanov A.G., Krasakov I.V., Haimov D.A. New approach to gait disorders therapy in late stages of Parkinson's disease. *Uspekhi gerontologii* 2012; 25(2): 267–274.